

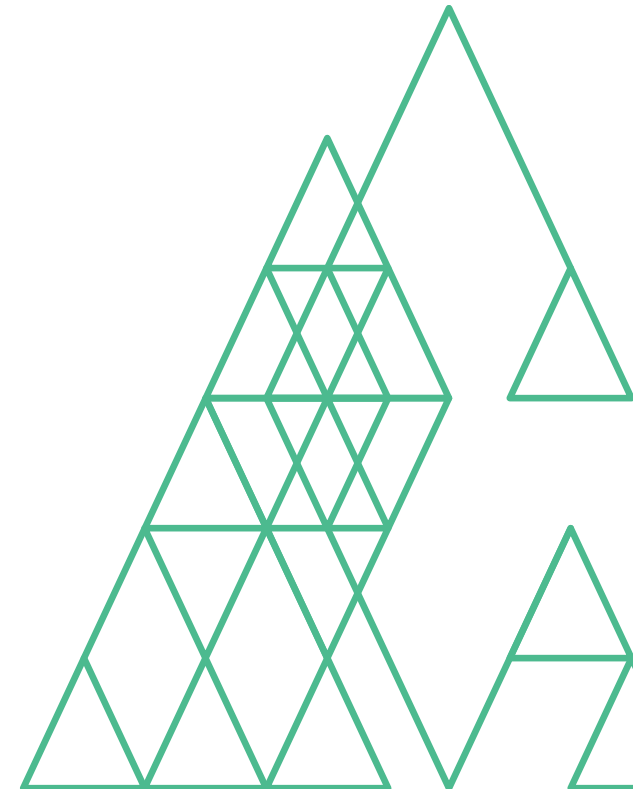
The background of the slide features a photograph of two workers in orange safety vests and hard hats (one white, one yellow) looking at a tablet. They are standing in front of a large wind turbine. The scene is set at sunset or sunrise, with a warm orange glow in the sky. In the distance, other wind turbines and rolling hills are visible. On the right side of the image, there is a decorative graphic consisting of a large triangle made of smaller white-outlined triangles.

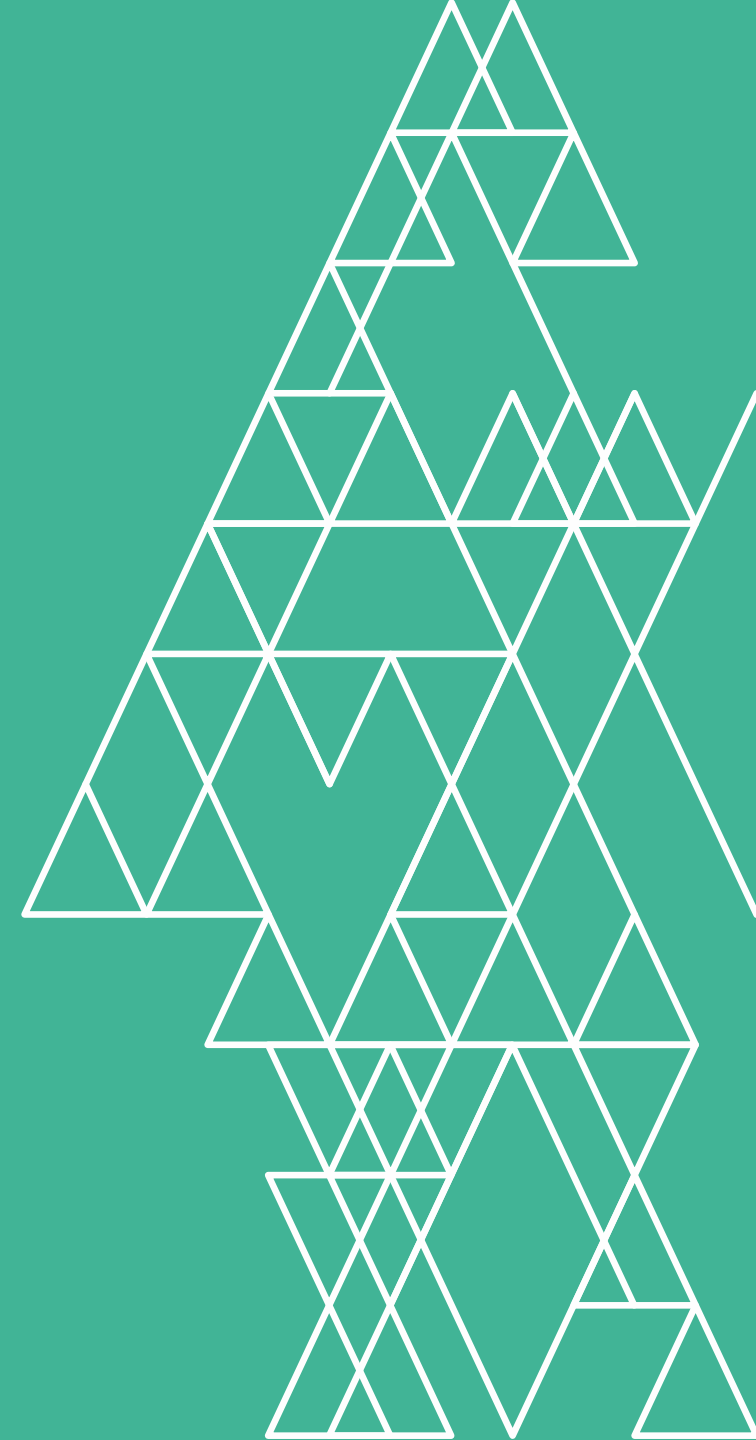
GIDI: Clean Tech Commercial Lighting Programme

Supplier Briefing October 2023

Housekeeping

- **Live Q&A** will be open and visible throughout the session – we will keep an eye on what comes through and answer as many questions as possible at the end of the presentation
- **Please disable camera and mics will be** for duration of the webinar
- The webinar is **being recorded** and will be made available in the coming days
- We expect this webinar to run **45mins to an hour**



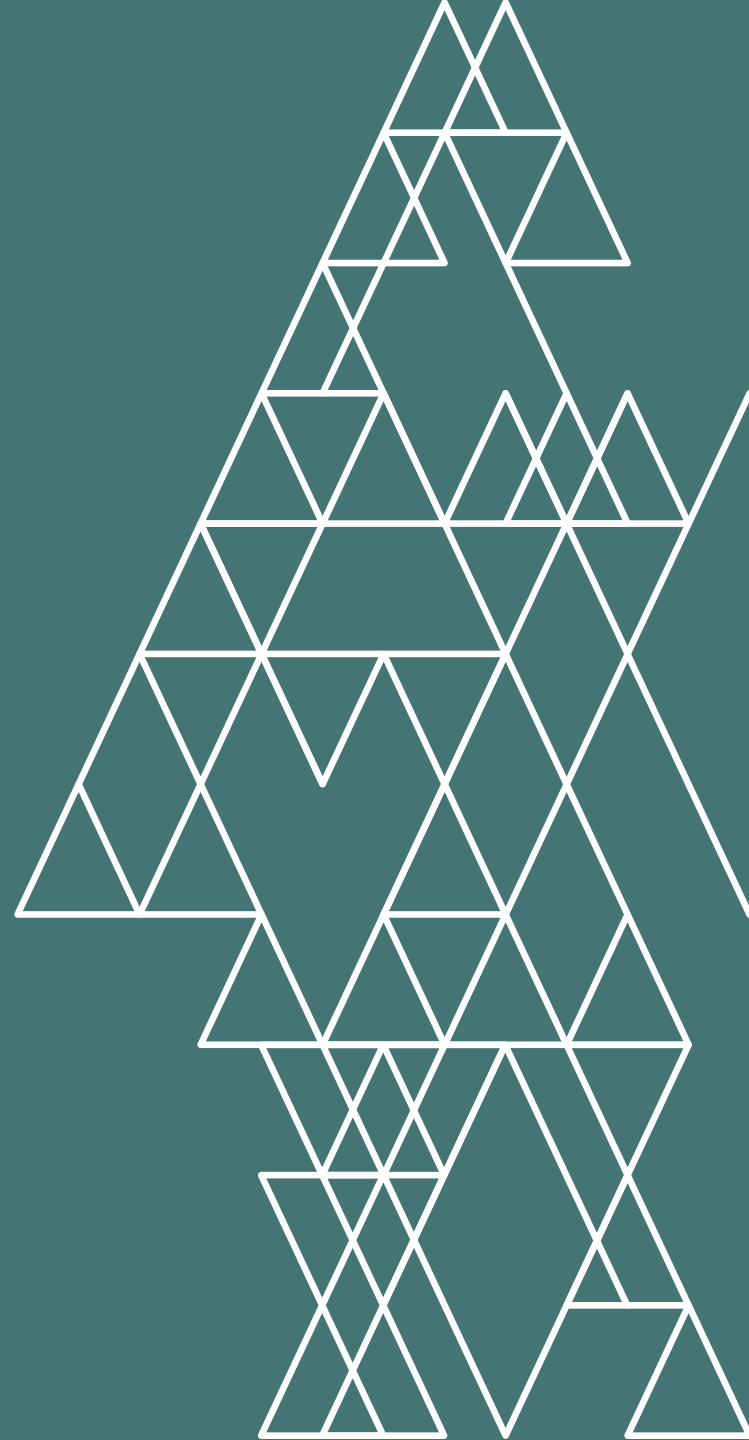


Contents

1. Purpose
2. Delivery Model
3. RFP Overview
4. Questions

EECA

GIDI & Clean Tech overview



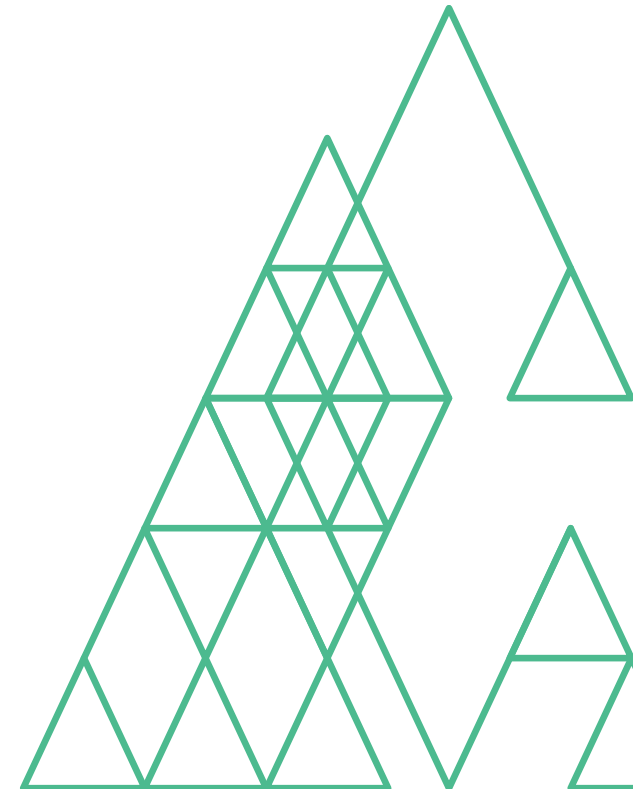
GIDI: Clean Tech

Clean Tech is for:

- SMEs (but not exclusively) and small, less complex fuel switch or energy efficiency opportunities

Four priority technologies:

- Water heating (HWHPs)
- Space heating
- Commercial lighting systems
- Electric motor systems



Purpose of the Commercial Lighting Programme



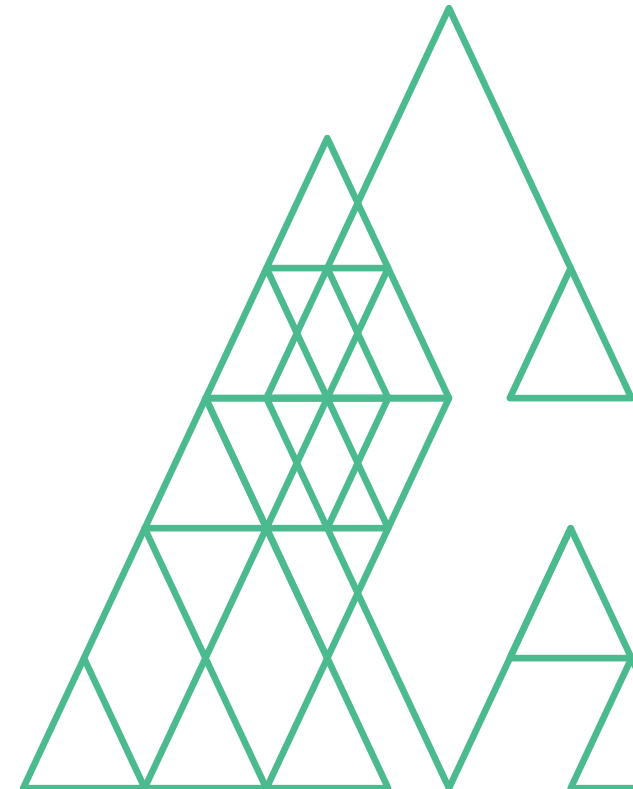
Purpose of Programme

To remove inefficient luminaires from office and commercial buildings and see these replaced with high-efficiency commercial lighting systems that optimise lighting outcomes and energy efficiency. Where appropriate, this may include use of LED luminaires with built in control functionality (e.g. daylight and motion sensing).



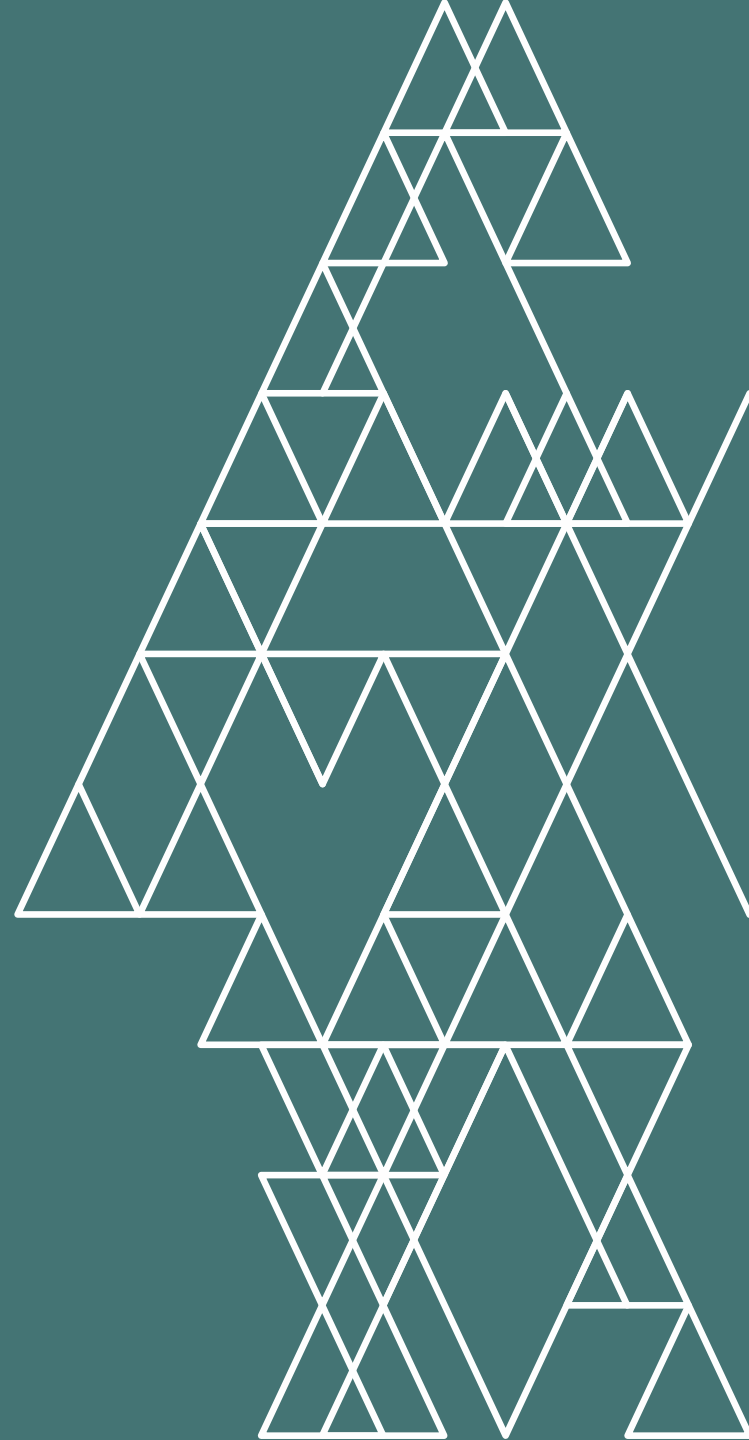
Why Commercial Lighting?

- Many of New Zealand's 160,000 SMEs are using inefficient technologies despite alternatives existing, resulting in at least 1 MtCO₂e/year of avoidable carbon emissions.
- The GIDI: Clean Tech programme is designed to specifically target this equipment used by SMEs. It aims to achieve direct carbon reduction of 4.2 million tonnes overall, or a peak of 270 kt per annum.
- Although the programme is focused on SMEs, it is also available to larger enterprises and local government.



EECA

Programme Delivery



How the programme will be delivered

The programme will be delivered through an approved supplier panel of up to 30 LED lighting providers to undertake standardised efficiency assessments and lighting retrofits based on international best practice, across multiple commercial sites in New Zealand.



What EECA needs to deliver the programme

There are 6 key features to delivering the programme:

- 1) Identifying and approaching suitable businesses to participate in the programme.
- 2) Conducting standardised site assessments and reporting of findings, including costs for proposed work back to EECA.
- 3) Presentation of EECA's co-funding proposals back to businesses.
- 4) Sourcing a range of different commercial lighting system products that meet EECA's requirements.
- 5) Managing and installing lighting systems products on site and disposal of replaced equipment and any other waste.
- 6) Providing progress and post project completion reporting to EECA throughout the duration of the programme.

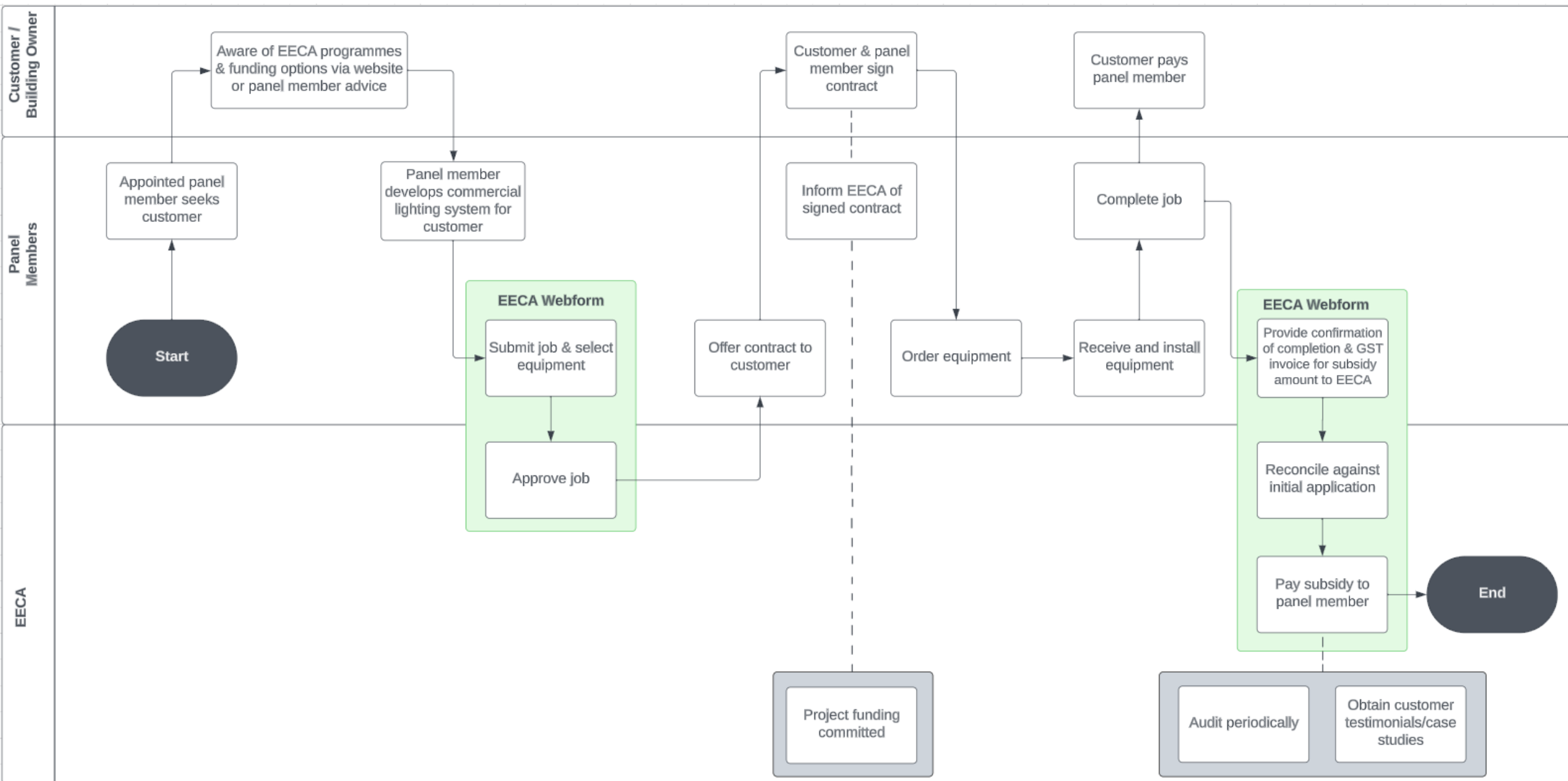


Types of Sites

EECA welcomes applications for any commercial site that can show outstanding energy efficiency regardless of size. Some examples are:

- 1) Office lighting
- 2) Commercial lighting
- 3) Covered Car parks
- 4) Recreation facilities
- 5) Other





Funding Model

For qualifying installations EECA will co-fund up to 50% of total project costs (these are defined as the costs invoiced to the end user).

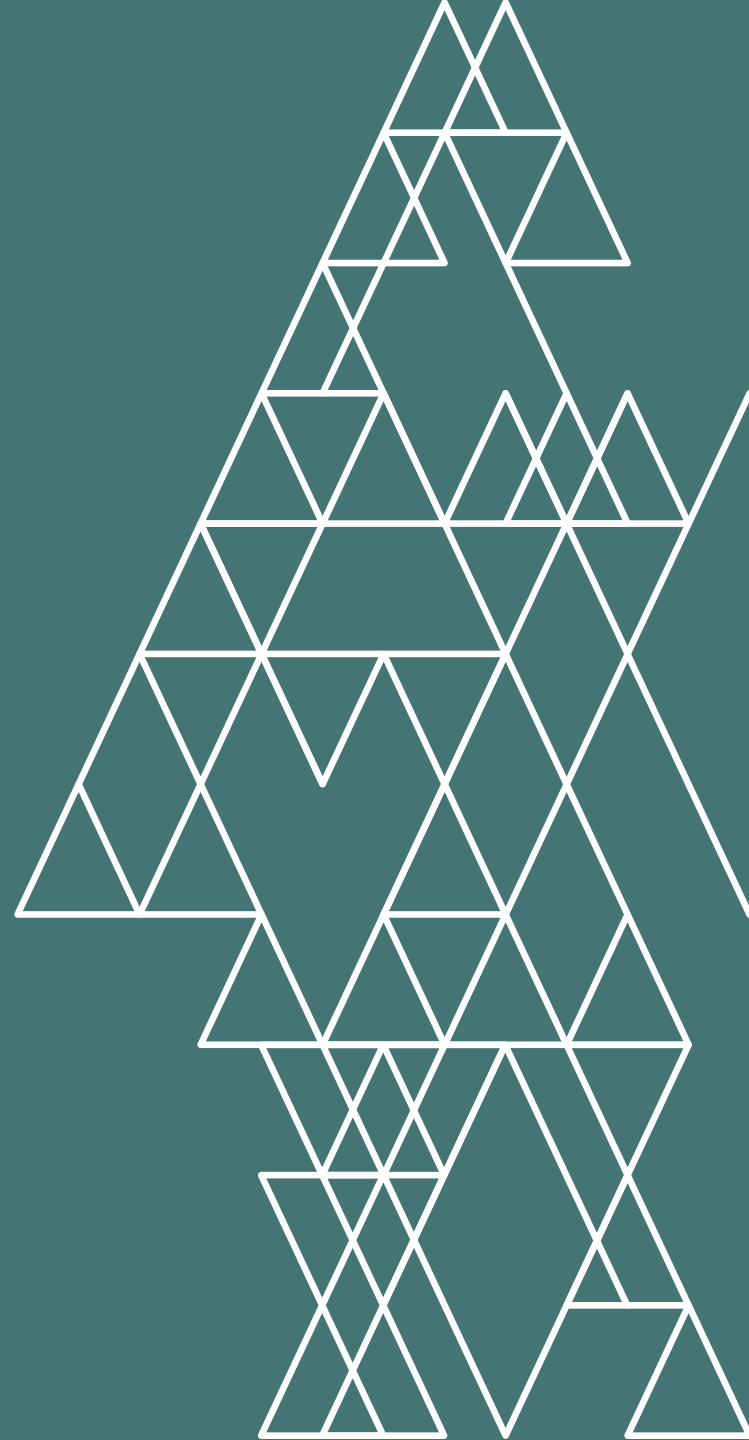
The funding model is based on lighting upgrade projects meeting two of the following three criteria:

1. Maximum levelized cost to EECA of \$65/MWh
2. Maximum full marginal abatement cost of \$200/t CO₂e
3. Minimum of 60% efficiency improvement

NB: if a project does not meet the levelized cost per MWh criteria, funding would be scaled to meet the requirements.

EECA

RFP Overview



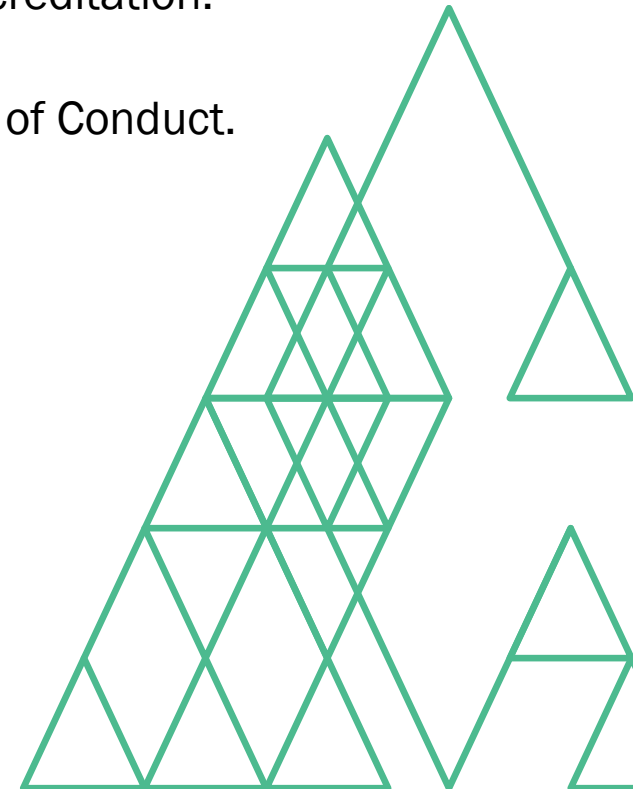
Pre-Conditions

- 1) The respondent is New Zealand-based, is registered with the New Zealand companies' office and has a New Zealand Business Number.
- 2) You must confirm that your company is a full-service supplier, i.e. you manage the entire process, including:
 - accurately scoping and pricing each lighting upgrade.
 - sourcing and installing the LED lighting equipment.
 - training the end users in its use; and providing warranty and back up service.
- 3) You must have completed commercial lighting design, supply, and installation projects at 10 sites in the last 3 years of a minimum value of \$10,000 NZD each.



Pre-Conditions

- 4) You must have qualified lighting designers in house or in your business consortium, who have experience meeting light standards such as AS/NZS 1680.
- 5) Provide evidence of a New Zealand recognised Health and Safety pre-qualification accreditation.
- 6) You must confirm your company's compliance with the NZ Government Supplier Code of Conduct.



Our Process

- Request for Proposals open – 5th October 2023
- Deadline for Questions – 30 August 2024
- Deadline for us to answer questions (indicative) – Within 2 days of receipt
- Deadline for Proposals – 5pm 30th September 2024 or when the programme budget is expended
- Successful Respondents notified – within 30 days of receipt of proposals
- Expected start date of Contract – On individual contract signing



Questions

Ngā mihi





TE TARI TIAKI PŪNGAO
ENERGY EFFICIENCY & CONSERVATION AUTHORITY



Stay in the loop of latest developments ([@EECA_nz](#), [LinkedIn](#))

Contact us with any questions (CleanTech@eeeca.govt.nz)

Find everything on the GIDI fund here (www.eeca.govt.nz/gidifund)

